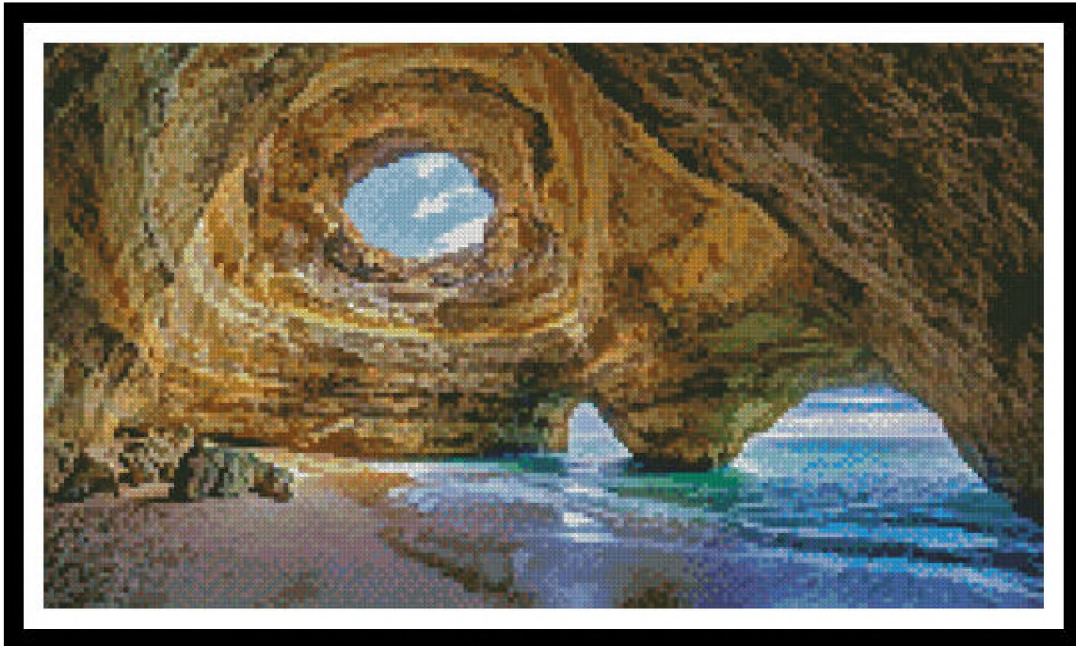


Artecy

CROSS STITCH

Mini Benagil Cave



* Original image© Johannes Plenio - Pixabay
Cross Stitch Design by Tereena Clarke.

Completed Size = 200w x 113h Stitches

14 Count, 14.5w x 8.5h inches (37cm x 22cm)

16 Count, 12.5w x 7.5h inches (32cm x 19cm)

18 Count, 11.5w x 6.5h inches (29cm x 17cm)

Uses 92 DMC cotton colours. Only full cross stitches are used in this pattern.

Pattern Instructions

* This pattern can be worked on any fabric type, colour or count you prefer. To work out the size of the finished article, take the number of stitches wide and high and divide it by the count of your fabric (e.g. 14,16,18 count aida etc) to get the size in inches. Times it by 2.54 to get centimetres. We have the sizes in inches shown on the previous page. Also leave at least a few inches of fabric around each side of the design to assist in framing. The higher the fabric count the smaller the completed project will be.

* To put the pattern together look in the top and bottom corners. The page numbers in brackets show which page number it joins up to. Page 1 always starts at the top left hand side of the pattern. Our pages also have a shaded grey section. This indicates a 3 row overlap from adjoining pages to assist with reading the pattern. PLEASE DO NOT RESTITCH THIS AREA.

* You should begin at the centre of the pattern. To find the centre of the pattern it is just a matter of laying the pattern out and locating the arrows at the top and left hand side of the patterns, they are determined by dividing the stitch numbers wide and high in half. Where the two points meet in the middle, that is the centre.

* If you need more assistance to find the middle of your pattern or the page layout, please see the notes section on the colour symbol chart. The easiest way to stitch this pattern, as it has multiple pages, is to stitch one page at a time.

* We suggest using two strands of floss for each stitch and one strand for backstitching if the pattern calls for it.

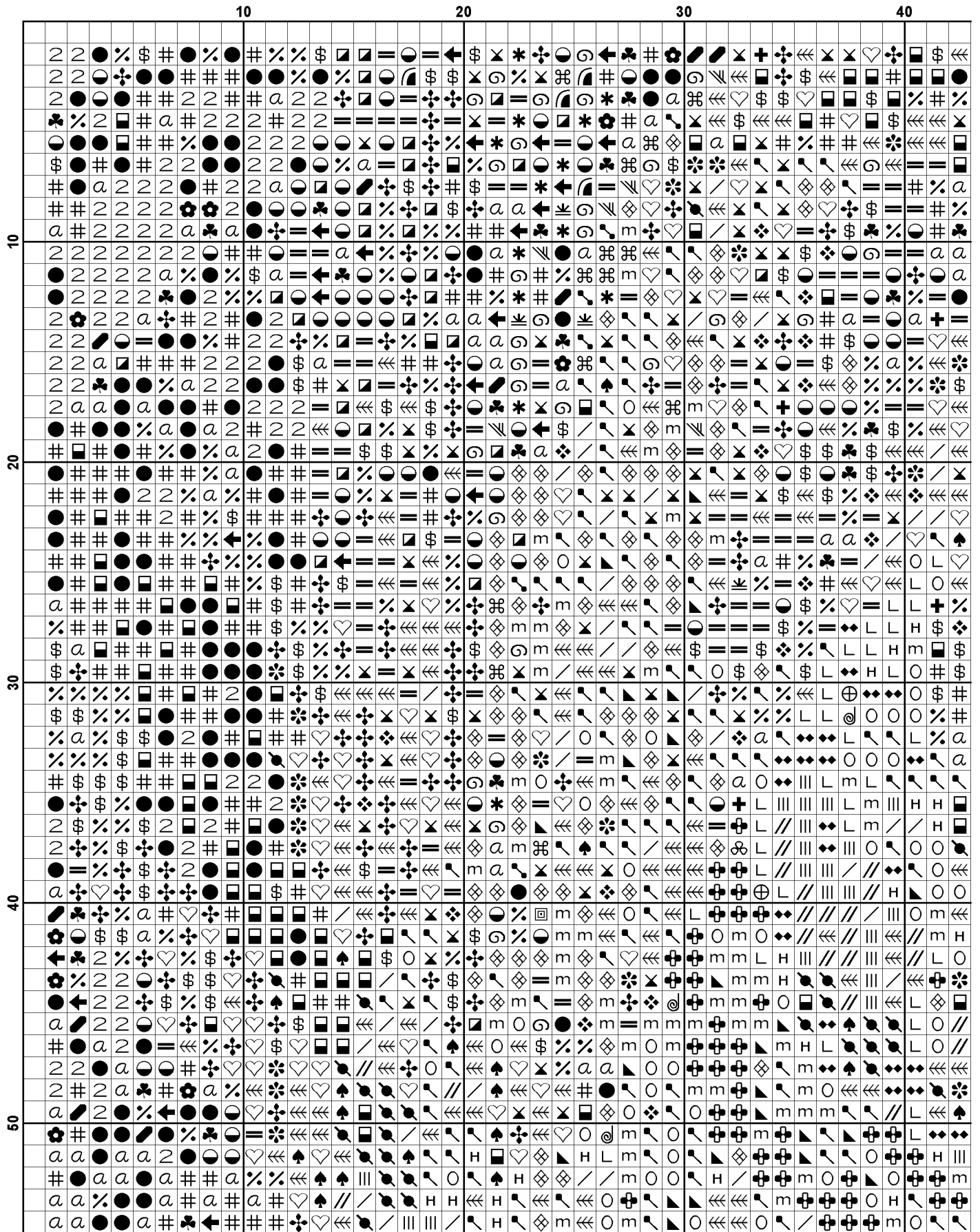
We hope you enjoy stitching our pattern.

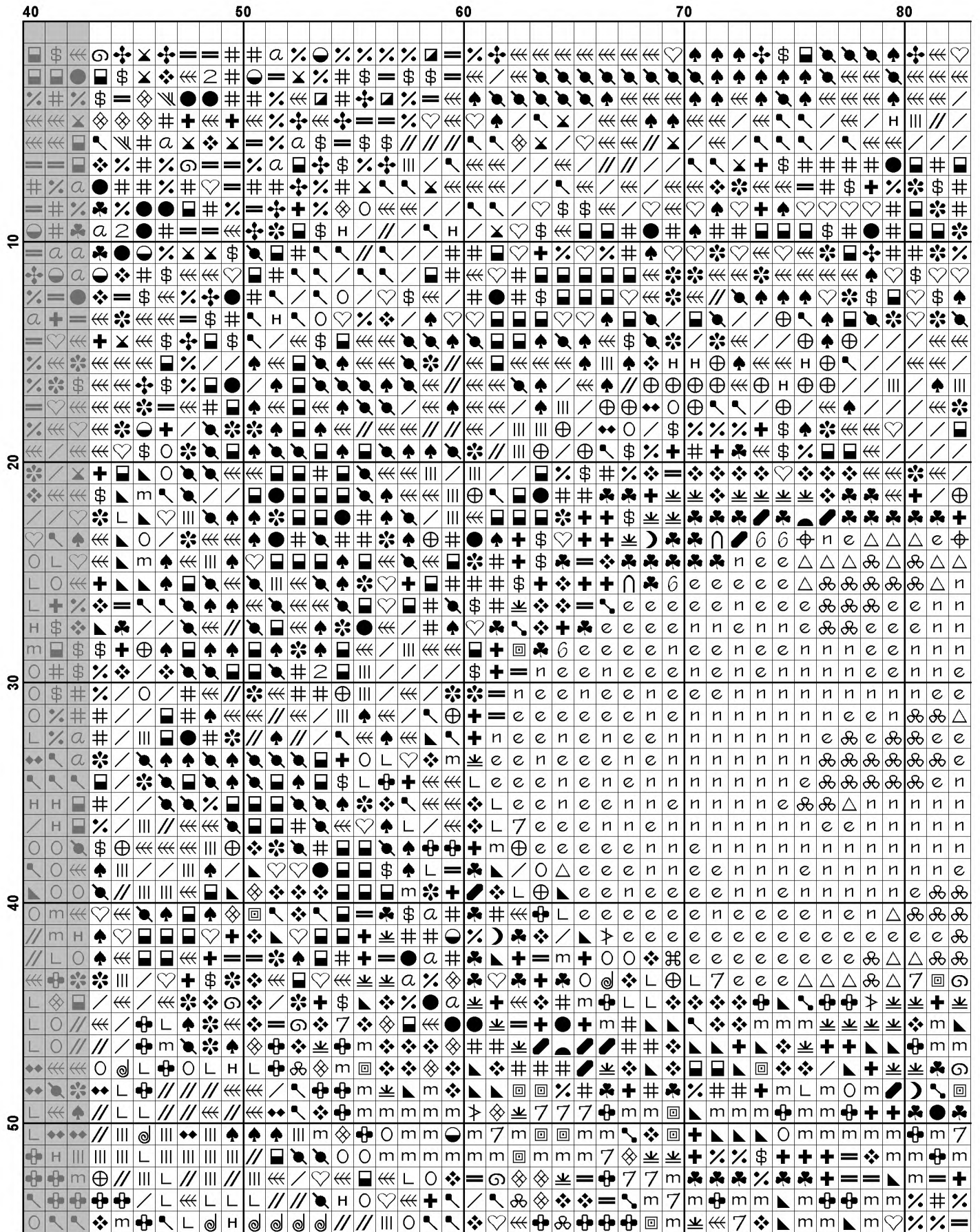
Thanks and Best Wishes
Tereena Clarke

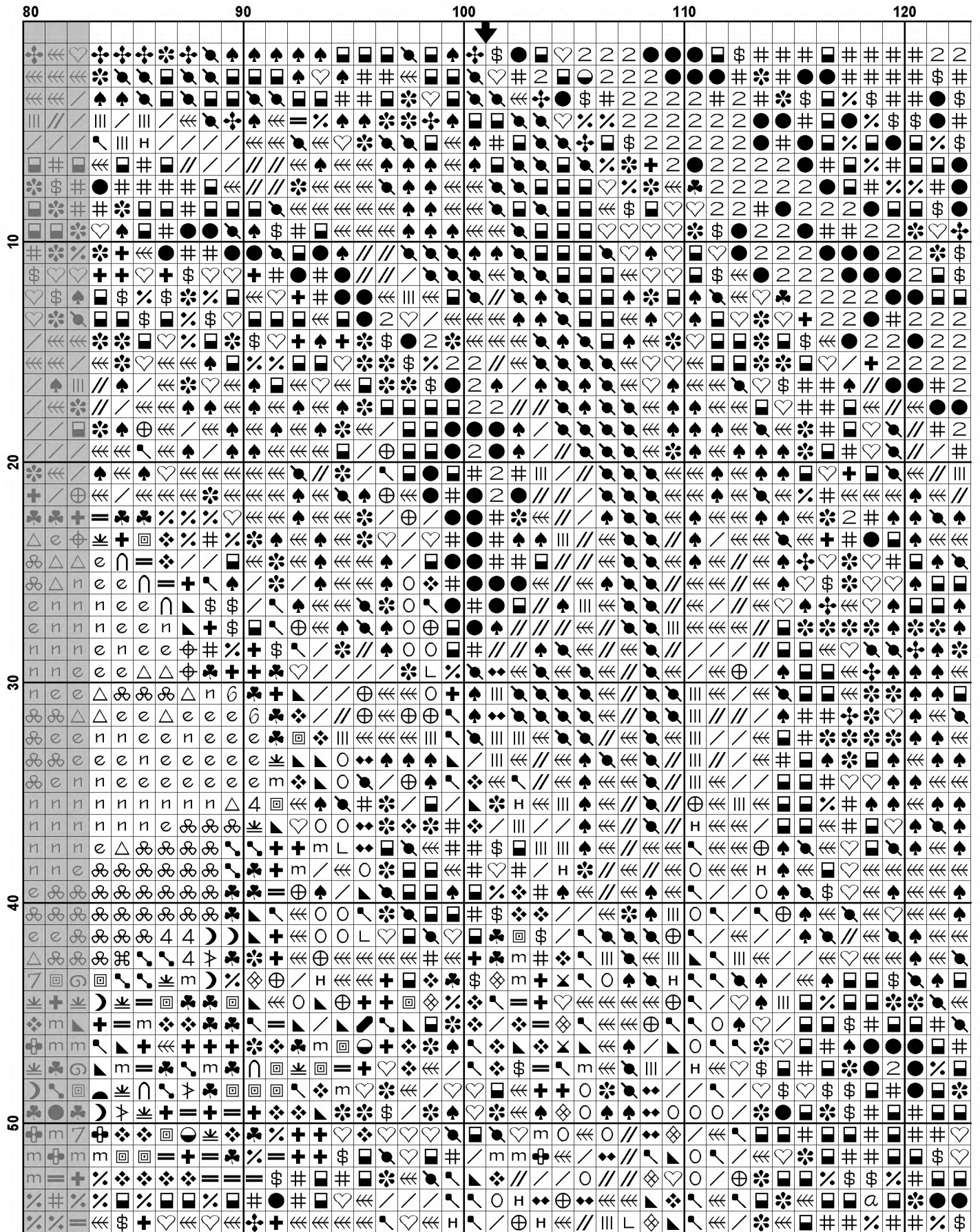
Artecy Cross Stitch
Po Box 3474
Tuggerah, NSW 2259
Australia

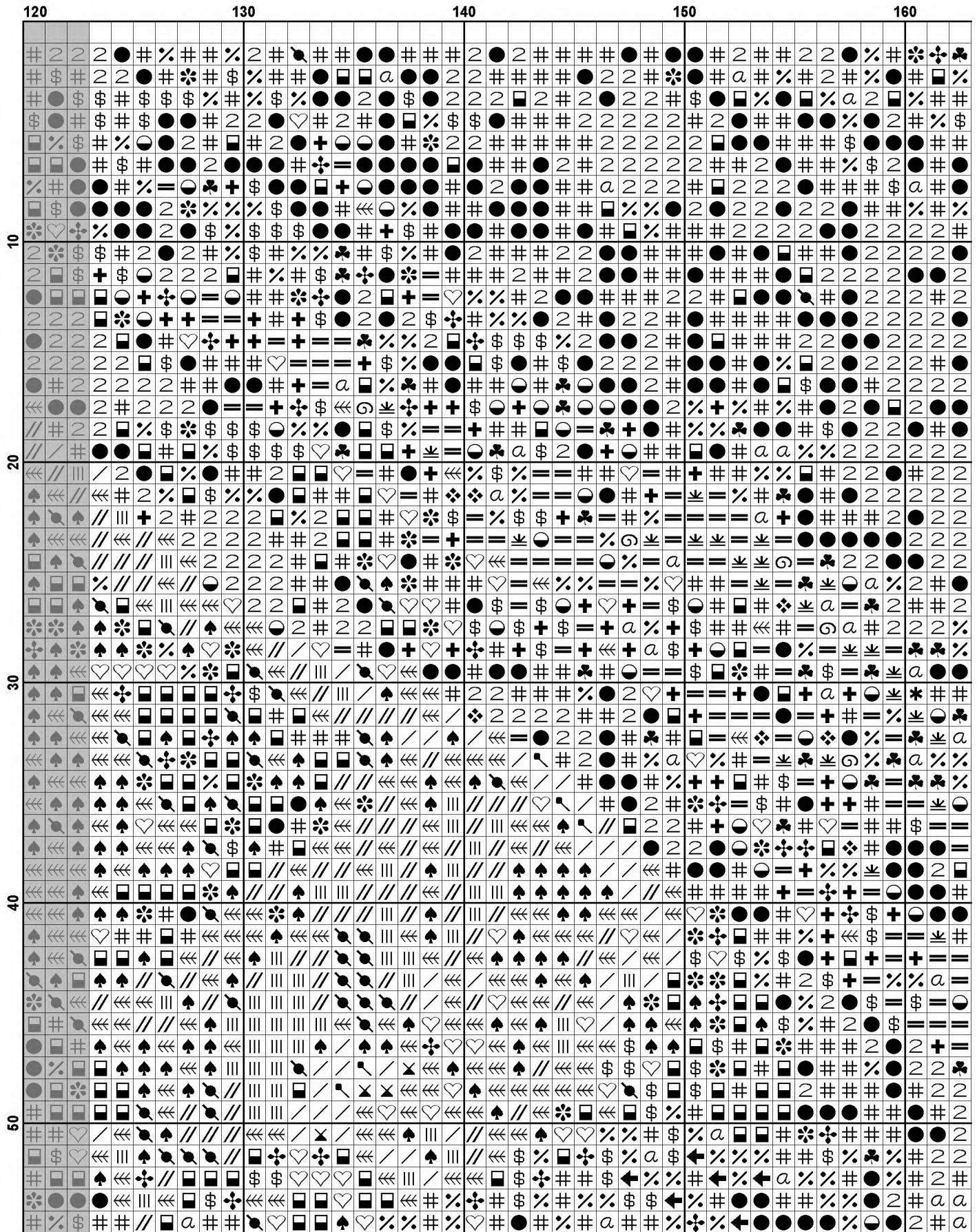
Websites: www.artecy.com and www.artecyshop.com
Email: artecy@artecy.com or stitch@artecyshop.com

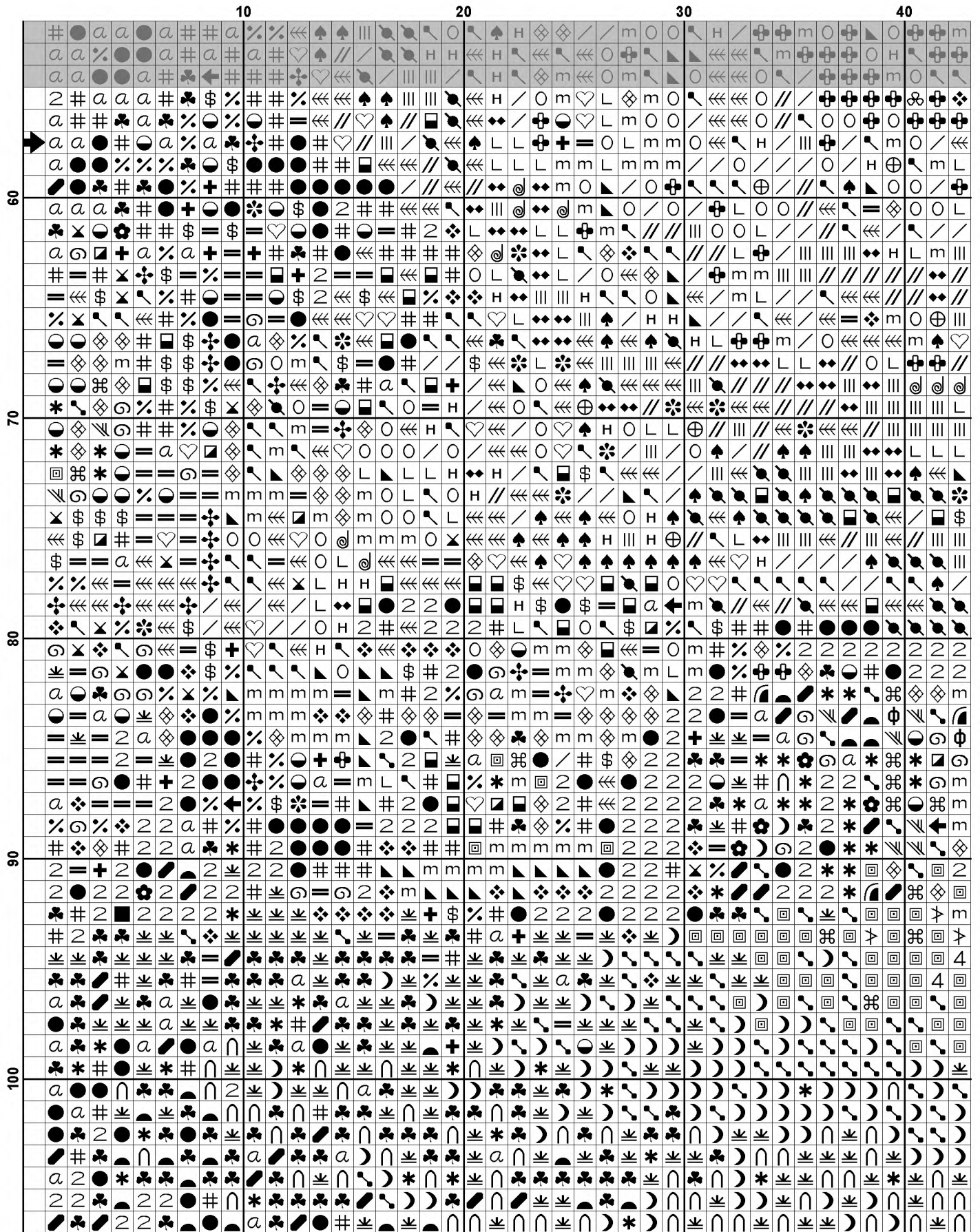
*Patterns are strictly for personal use only. It is against our copyright to make kits for sale from our designs or to sell, copy or redistribute this pattern in any form. You may not upload our patterns to any internet forums or groups or any other website. You may make 1 copy of this pattern for a working copy for your own personal use if needed.

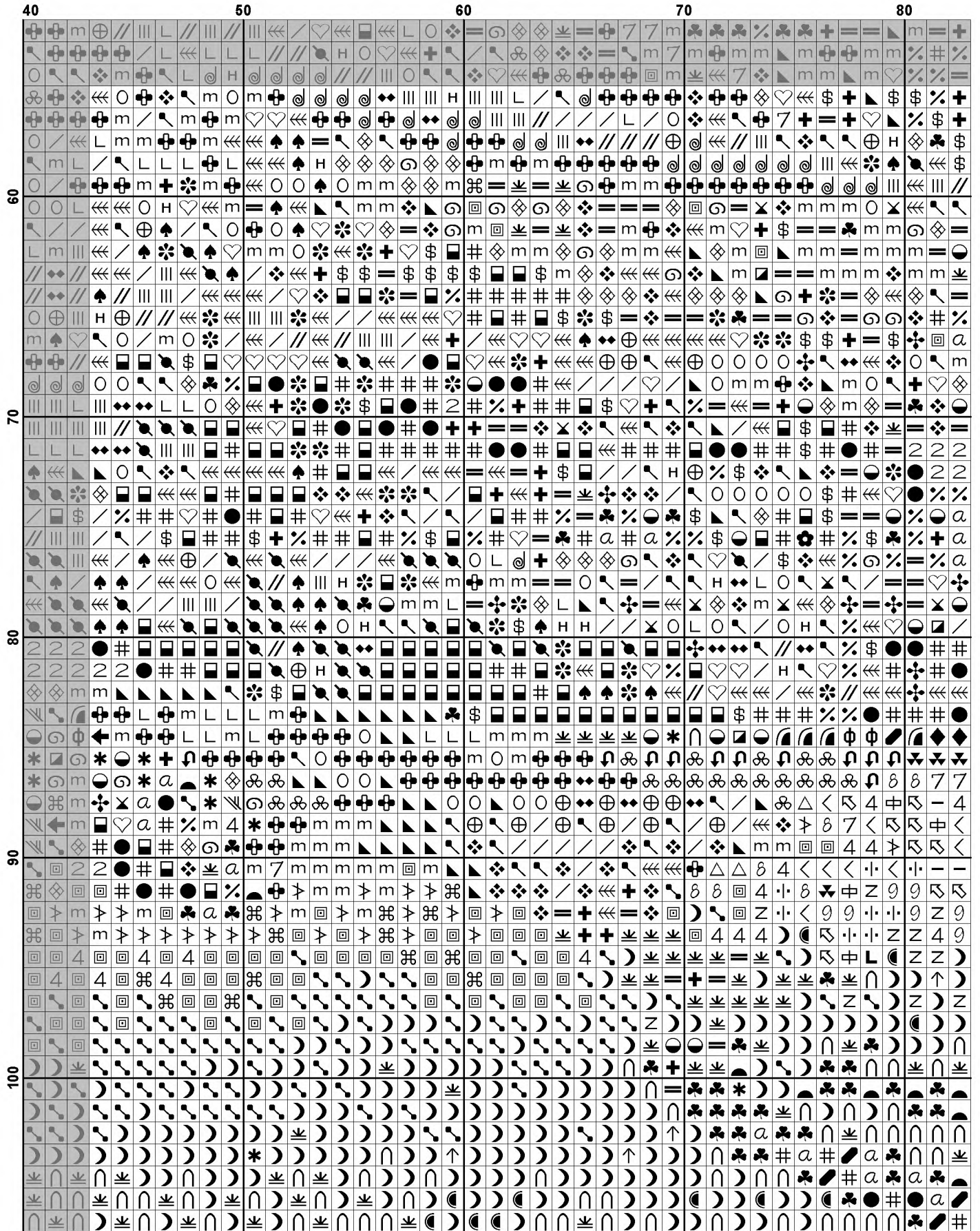


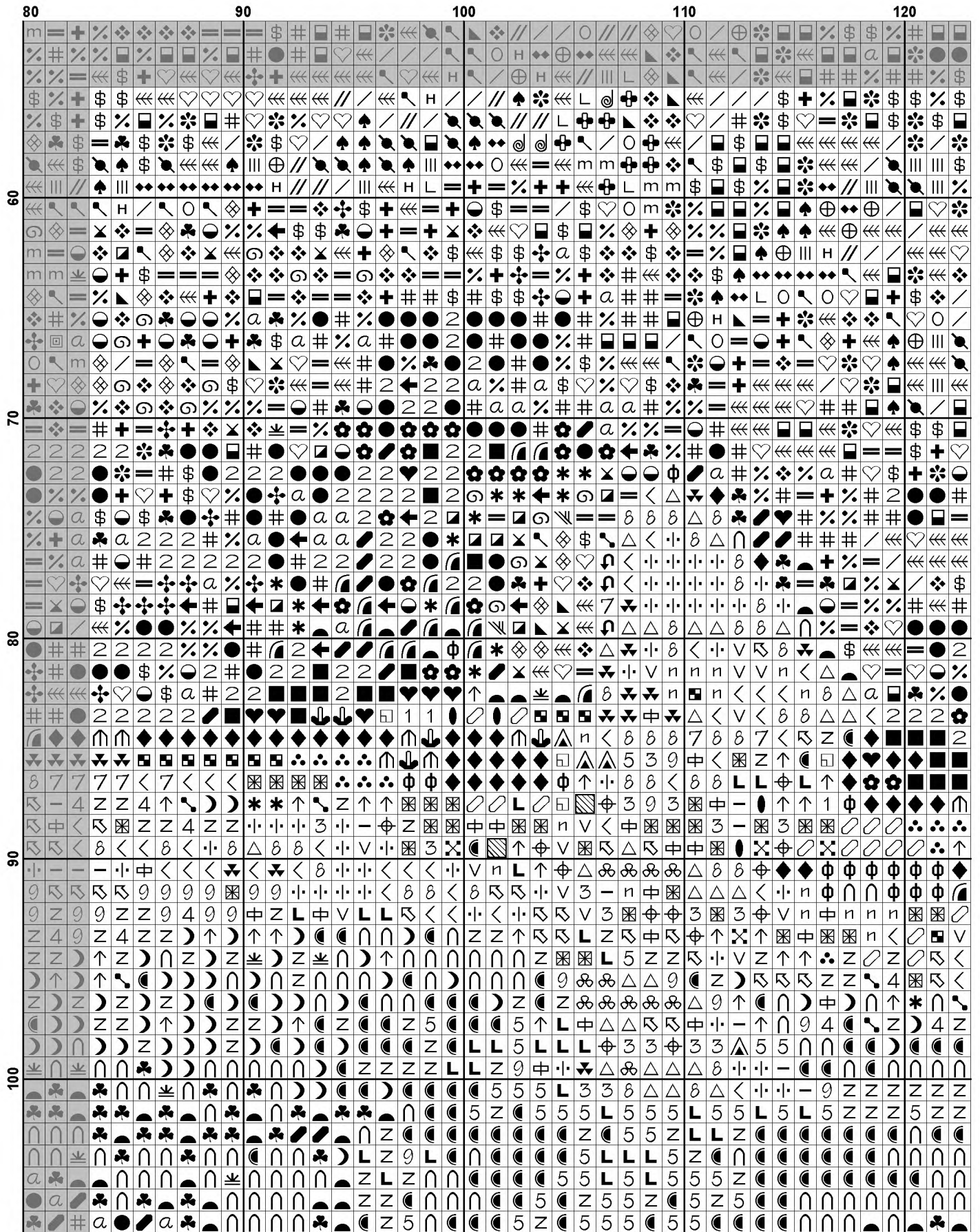


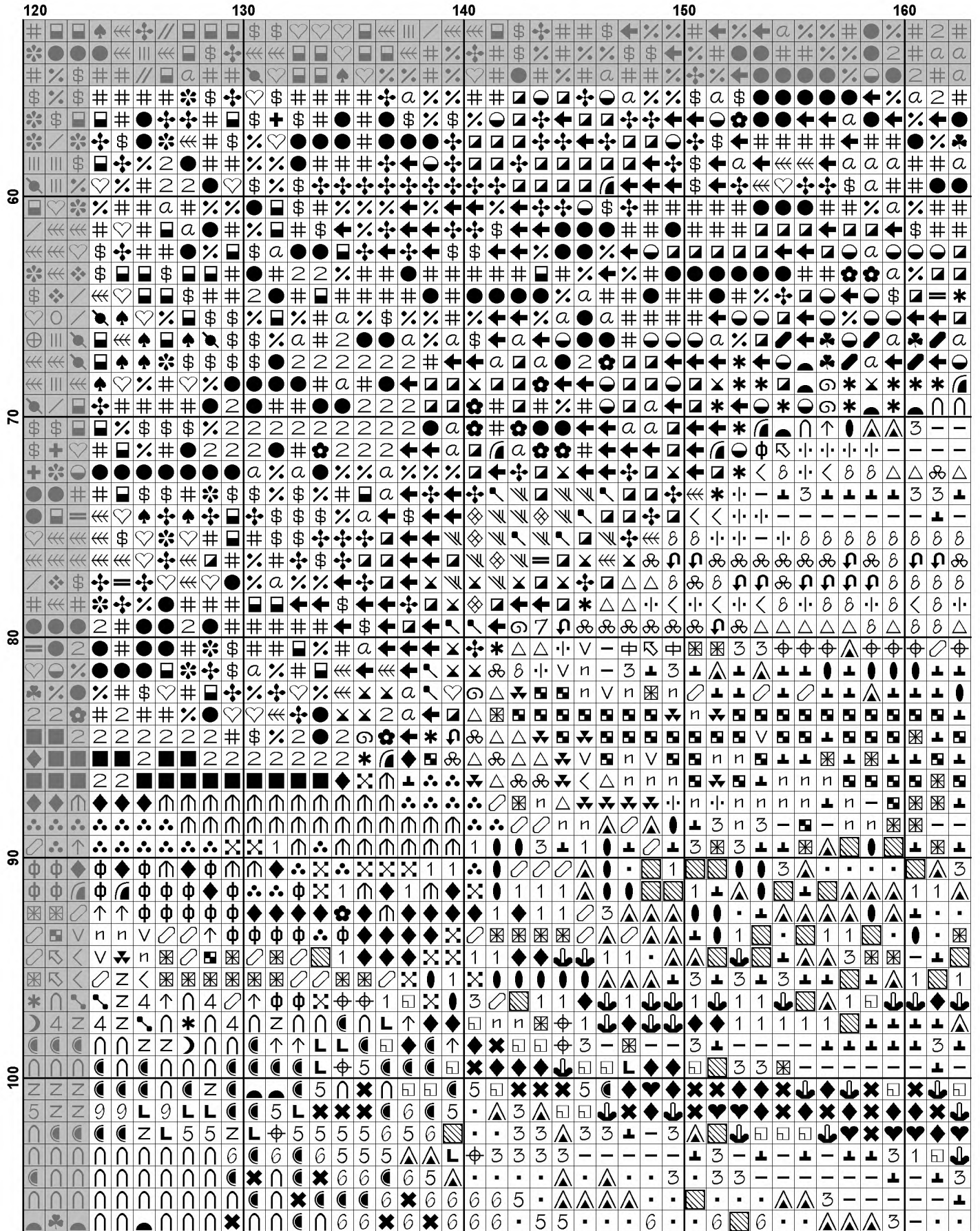


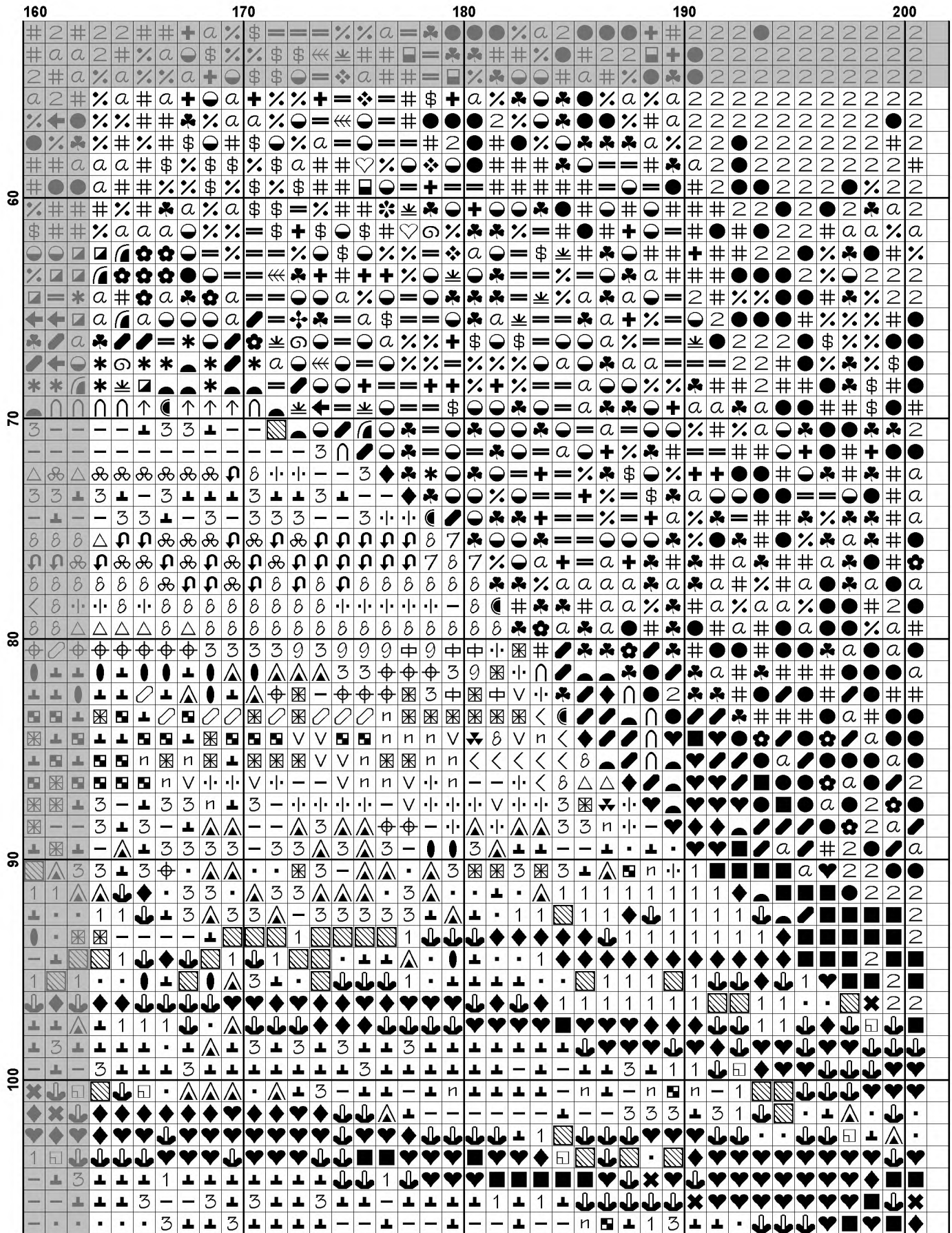


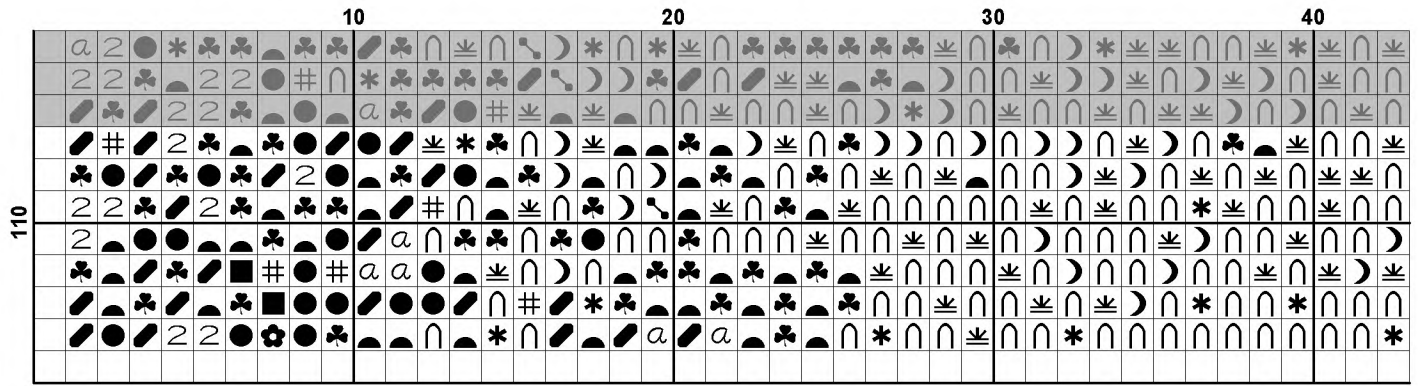


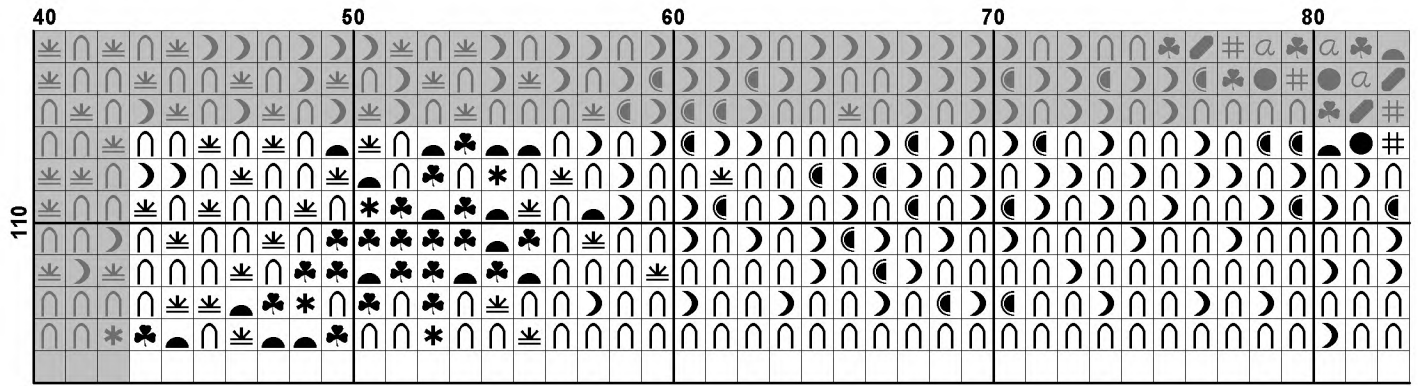


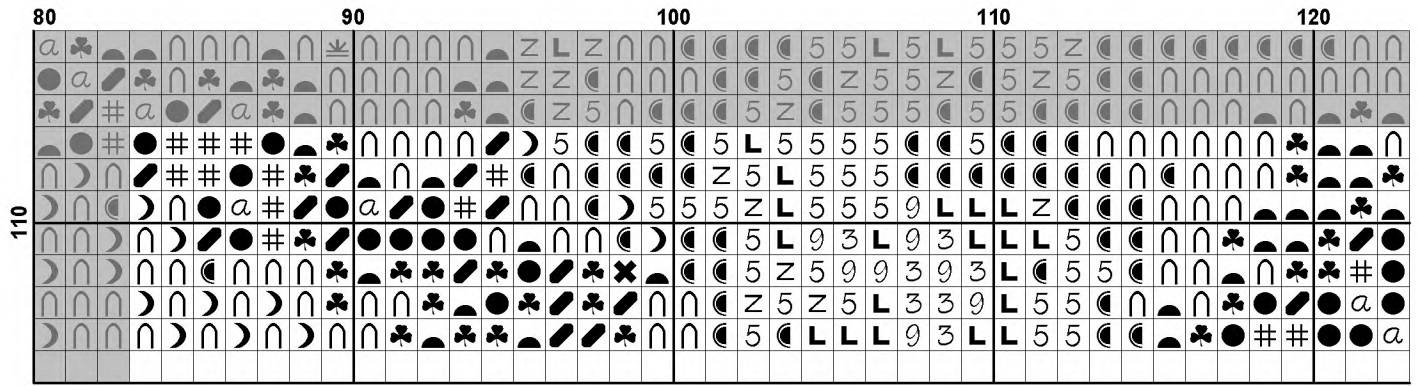


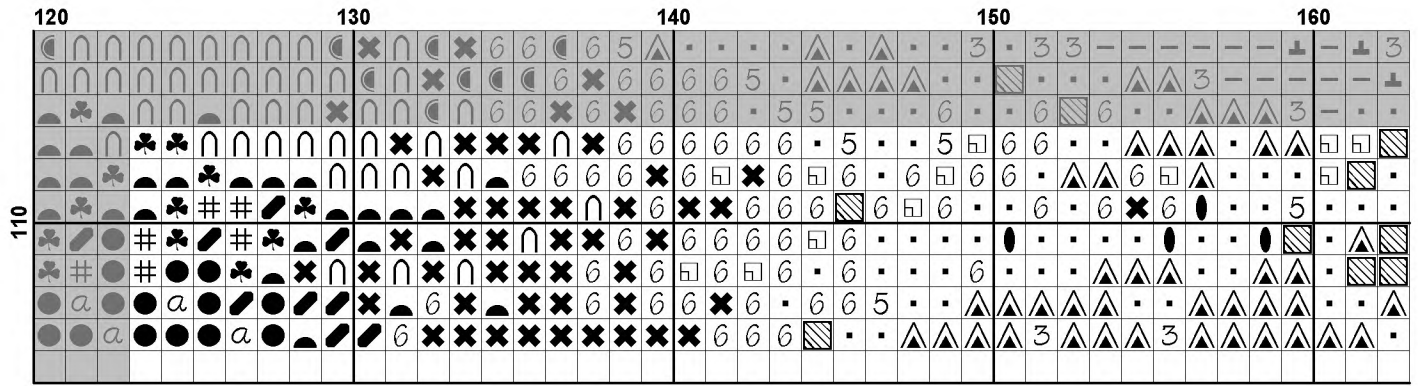


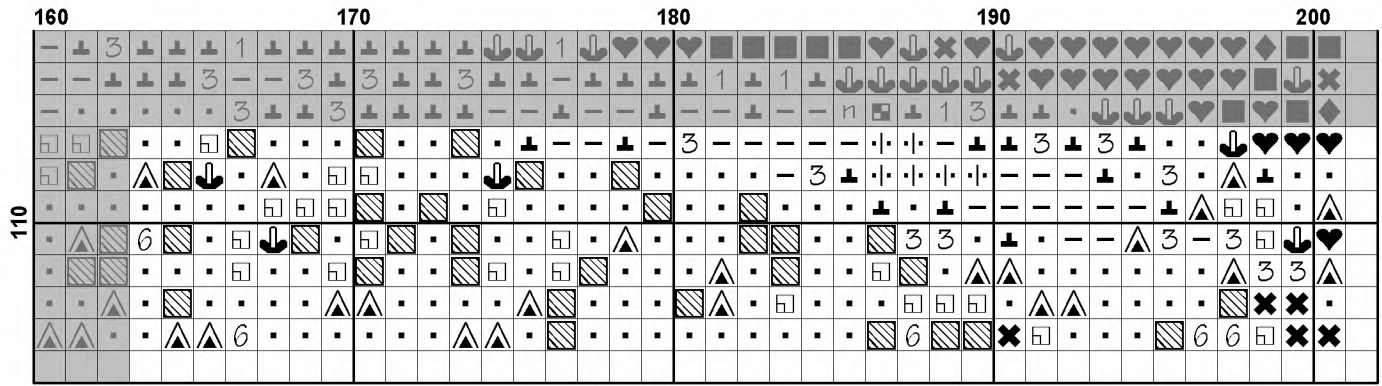












Pattern Name: Mini Benagil Cave
Designed By: Photo by Julius Silver - Pixabay
Company: Artecy Cross Stitch
Copyright: Copyright Artecy Cross Stitch. All rights Reserved.
Fabric: Aida 14, White
 200w X 113h Stitches
Size(s): 14 Count, 14-1/4w X 8h in
 16 Count, 12-1/2w X 7h in
 18 Count, 11w X 6-1/4h in

Floss Used for Full Stitches:

Symbol	Strands	Type	Number	Color
	2	DMC	156	Blue Violet-MD LT
	2	DMC	158	Cornflower Blue-MD VY DK
	2	DMC	159	Gray Blue-LT
	2	DMC	160	Gray Blue-MD
	2	DMC	161	Gray Blue
	2	DMC	300	Mahogany-VY DK
	2	DMC	310	Black
	2	DMC	317	Pewter Gray
	2	DMC	318	Steel Gray-LT
	2	DMC	334	Baby Blue-MD
	2	DMC	400	Mahogany-DK
	2	DMC	413	Pewter Gray-DK
	2	DMC	420	Hazelnut Brown-DK
	2	DMC	433	Brown-MD
	2	DMC	434	Brown-LT
	2	DMC	435	Brown-VY LT
	2	DMC	436	Tan
	2	DMC	451	Shell Gray-DK
	2	DMC	501	Blue Green-DK
	2	DMC	519	Sky Blue
	2	DMC	520	Fern Green-DK
	2	DMC	597	Turquoise
	2	DMC	610	Drab Brown-DK
	2	DMC	612	Drab Brown-LT
	2	DMC	632	Desert Sand-UL VY DK
	2	DMC	640	Beige Gray-VY DK
	2	DMC	645	Beaver Gray-VY DK
	2	DMC	647	Beaver Gray-MD
	2	DMC	677	Old Gold-VY LT
	2	DMC	729	Old Gold-MD
	2	DMC	762	Pearl Gray-VY LT
	2	DMC	775	Baby Blue-VY LT
	2	DMC	779	Cocoa-DK
	2	DMC	780	Topaz-UL VY DK
	2	DMC	782	Topaz-DK
	2	DMC	792	Cornflower Blue-DK
	2	DMC	793	Cornflower Blue-MD
	2	DMC	794	Cornflower Blue-LT
	2	DMC	798	Delft Blue-DK
	2	DMC	799	Delft Blue-MD
	2	DMC	800	Delft Blue-Pale
	2	DMC	801	Coffee Brown-DK
	2	DMC	809	Delft Blue
	2	DMC	813	Blue-LT
	2	DMC	823	Navy Blue-DK

Symbol	Strands	Type	Number	Color
	2	DMC	824	Blue-VY DK
	2	DMC	825	Blue-DK
	2	DMC	826	Blue-MD
	2	DMC	827	Blue-VY LT
	2	DMC	830	Golden Olive-DK
	2	DMC	931	Antique Blue-MD
	2	DMC	934	Black Avocado Green
	2	DMC	936	Avocado Green-VY DK
	2	DMC	938	Coffee Brown-UL DK
	2	DMC	939	Navy Blue-VY DK
	2	DMC	975	Golden Brown-DK
	2	DMC	976	Golden Brown-MD
	2	DMC	977	Golden Brown-LT
	2	DMC	992	Aquamarine-MD
	2	DMC	996	Electric Blue-MD
	2	DMC	3011	Khaki Green-DK
	2	DMC	3012	Khaki Green-MD
	2	DMC	3031	Mocha Brown-VY DK
	2	DMC	3041	Antique Violet-MD
	2	DMC	3042	Antique Violet-LT
	2	DMC	3064	Desert Sand
	2	DMC	3325	Baby Blue-LT
	2	DMC	3364	Pine Green
	2	DMC	3371	Black Brown
	2	DMC	3743	Antique Violet-VY LT
	2	DMC	3747	Blue Violet-VY LT
	2	DMC	3760	Wedgewood-MD
	2	DMC	3761	Sky Blue-LT
	2	DMC	3765	Peacock Blue-VY DK
	2	DMC	3766	Peacock Blue-LT
	2	DMC	3772	Desert Sand-VY DK
	2	DMC	3776	Mahogany-LT
	2	DMC	3799	Pewter Gray-VY DK
	2	DMC	3807	Cornflower Blue
	2	DMC	3808	Turquoise-UL VY DK
	2	DMC	3810	Turquoise-DK
	2	DMC	3822	Straw-LT
	2	DMC	3827	Golden Brown-Pale
	2	DMC	3828	Hazelnut Brown
	2	DMC	3840	Lavender Blue-LT
	2	DMC	3842	Wedgewood-DK
	2	DMC	3850	Bright Green-DK
	2	DMC	3860	Cocoa
	2	DMC	3861	Cocoa-LT
	2	DMC	3862	Mocha Beige-DK
	2	DMC	3864	Mocha Beige-LT
	2	DMC	3865	Winter White

Notes:

The middle of this pattern can be found on page 8 and is 101 stitches across and 58 stitches down.

Pattern layout using page numbers in top left.

```

1  2  3  4  5
6  7  8  9 10
11 12 13 14 15

```

Usage Summary

Strands Per Skein: 6

Skein Length: 313.0 in

Type	Number	Full	Half	Quarter	Petite	Back(in)	Str(in)	Spec(in)	French	Bead	Skein Est.
DMC 156	156	43	0	0	0	0.0	0.0	0.0	0	0	1.000
DMC 158	158	82	0	0	0	0.0	0.0	0.0	0	0	1.000
DMC 159	159	36	0	0	0	0.0	0.0	0.0	0	0	1.000
DMC 160	160	107	0	0	0	0.0	0.0	0.0	0	0	1.000
DMC 161	161	218	0	0	0	0.0	0.0	0.0	0	0	1.000
DMC 300	300	807	0	0	0	0.0	0.0	0.0	0	0	1.000
DMC 310	310	1337	0	0	0	0.0	0.0	0.0	0	0	1.000
DMC 317	317	590	0	0	0	0.0	0.0	0.0	0	0	1.000
DMC 318	318	33	0	0	0	0.0	0.0	0.0	0	0	1.000
DMC 334	334	46	0	0	0	0.0	0.0	0.0	0	0	1.000
DMC 400	400	412	0	0	0	0.0	0.0	0.0	0	0	1.000
DMC 413	413	185	0	0	0	0.0	0.0	0.0	0	0	1.000
DMC 420	420	1151	0	0	0	0.0	0.0	0.0	0	0	1.000
DMC 433	433	603	0	0	0	0.0	0.0	0.0	0	0	1.000
DMC 434	434	426	0	0	0	0.0	0.0	0.0	0	0	1.000
DMC 435	435	491	0	0	0	0.0	0.0	0.0	0	0	1.000
DMC 436	436	232	0	0	0	0.0	0.0	0.0	0	0	1.000
DMC 451	451	196	0	0	0	0.0	0.0	0.0	0	0	1.000
DMC 501	501	42	0	0	0	0.0	0.0	0.0	0	0	1.000
DMC 519	519	231	0	0	0	0.0	0.0	0.0	0	0	1.000
DMC 520	520	38	0	0	0	0.0	0.0	0.0	0	0	1.000
DMC 597	597	52	0	0	0	0.0	0.0	0.0	0	0	1.000
DMC 610	610	411	0	0	0	0.0	0.0	0.0	0	0	1.000
DMC 612	612	254	0	0	0	0.0	0.0	0.0	0	0	1.000
DMC 632	632	358	0	0	0	0.0	0.0	0.0	0	0	1.000
DMC 640	640	108	0	0	0	0.0	0.0	0.0	0	0	1.000
DMC 645	645	129	0	0	0	0.0	0.0	0.0	0	0	1.000
DMC 647	647	41	0	0	0	0.0	0.0	0.0	0	0	1.000
DMC 677	677	205	0	0	0	0.0	0.0	0.0	0	0	1.000
DMC 729	729	87	0	0	0	0.0	0.0	0.0	0	0	1.000
DMC 762	762	53	0	0	0	0.0	0.0	0.0	0	0	1.000
DMC 775	775	99	0	0	0	0.0	0.0	0.0	0	0	1.000
DMC 779	779	613	0	0	0	0.0	0.0	0.0	0	0	1.000
DMC 780	780	502	0	0	0	0.0	0.0	0.0	0	0	1.000
DMC 782	782	297	0	0	0	0.0	0.0	0.0	0	0	1.000
DMC 792	792	85	0	0	0	0.0	0.0	0.0	0	0	1.000
DMC 793	793	65	0	0	0	0.0	0.0	0.0	0	0	1.000
DMC 794	794	30	0	0	0	0.0	0.0	0.0	0	0	1.000
DMC 798	798	248	0	0	0	0.0	0.0	0.0	0	0	1.000
DMC 799	799	164	0	0	0	0.0	0.0	0.0	0	0	1.000
DMC 800	800	70	0	0	0	0.0	0.0	0.0	0	0	1.000
DMC 801	801	875	0	0	0	0.0	0.0	0.0	0	0	1.000
DMC 809	809	168	0	0	0	0.0	0.0	0.0	0	0	1.000
DMC 813	813	100	0	0	0	0.0	0.0	0.0	0	0	1.000
DMC 823	823	120	0	0	0	0.0	0.0	0.0	0	0	1.000
DMC 824	824	66	0	0	0	0.0	0.0	0.0	0	0	1.000
DMC 825	825	96	0	0	0	0.0	0.0	0.0	0	0	1.000
DMC 826	826	165	0	0	0	0.0	0.0	0.0	0	0	1.000
DMC 827	827	197	0	0	0	0.0	0.0	0.0	0	0	1.000
DMC 830	830	297	0	0	0	0.0	0.0	0.0	0	0	1.000
DMC 931	931	48	0	0	0	0.0	0.0	0.0	0	0	1.000

Type	Number	Full	Half	Quarter	Petite	Back(in)	Str(in)	Spec(in)	French	Bead	Skein	Est.
DMC	934	70	0	0	0	0.0	0.0	0.0	0	0	1.000	
DMC	936	150	0	0	0	0.0	0.0	0.0	0	0	1.000	
DMC	938	1630	0	0	0	0.0	0.0	0.0	0	0	1.000	
DMC	939	80	0	0	0	0.0	0.0	0.0	0	0	1.000	
DMC	975	312	0	0	0	0.0	0.0	0.0	0	0	1.000	
DMC	976	229	0	0	0	0.0	0.0	0.0	0	0	1.000	
DMC	977	107	0	0	0	0.0	0.0	0.0	0	0	1.000	
DMC	992	37	0	0	0	0.0	0.0	0.0	0	0	1.000	
DMC	996	224	0	0	0	0.0	0.0	0.0	0	0	1.000	
DMC	3011	142	0	0	0	0.0	0.0	0.0	0	0	1.000	
DMC	3012	153	0	0	0	0.0	0.0	0.0	0	0	1.000	
DMC	3031	452	0	0	0	0.0	0.0	0.0	0	0	1.000	
DMC	3041	415	0	0	0	0.0	0.0	0.0	0	0	1.000	
DMC	3042	33	0	0	0	0.0	0.0	0.0	0	0	1.000	
DMC	3064	177	0	0	0	0.0	0.0	0.0	0	0	1.000	
DMC	3325	36	0	0	0	0.0	0.0	0.0	0	0	1.000	
DMC	3364	33	0	0	0	0.0	0.0	0.0	0	0	1.000	
DMC	3371	1302	0	0	0	0.0	0.0	0.0	0	0	1.000	
DMC	3743	29	0	0	0	0.0	0.0	0.0	0	0	1.000	
DMC	3747	118	0	0	0	0.0	0.0	0.0	0	0	1.000	
DMC	3760	50	0	0	0	0.0	0.0	0.0	0	0	1.000	
DMC	3761	35	0	0	0	0.0	0.0	0.0	0	0	1.000	
DMC	3765	108	0	0	0	0.0	0.0	0.0	0	0	1.000	
DMC	3766	78	0	0	0	0.0	0.0	0.0	0	0	1.000	
DMC	3772	288	0	0	0	0.0	0.0	0.0	0	0	1.000	
DMC	3776	92	0	0	0	0.0	0.0	0.0	0	0	1.000	
DMC	3799	161	0	0	0	0.0	0.0	0.0	0	0	1.000	
DMC	3807	99	0	0	0	0.0	0.0	0.0	0	0	1.000	
DMC	3808	158	0	0	0	0.0	0.0	0.0	0	0	1.000	
DMC	3810	20	0	0	0	0.0	0.0	0.0	0	0	1.000	
DMC	3822	47	0	0	0	0.0	0.0	0.0	0	0	1.000	
DMC	3827	143	0	0	0	0.0	0.0	0.0	0	0	1.000	
DMC	3828	398	0	0	0	0.0	0.0	0.0	0	0	1.000	
DMC	3840	114	0	0	0	0.0	0.0	0.0	0	0	1.000	
DMC	3842	124	0	0	0	0.0	0.0	0.0	0	0	1.000	
DMC	3850	45	0	0	0	0.0	0.0	0.0	0	0	1.000	
DMC	3860	359	0	0	0	0.0	0.0	0.0	0	0	1.000	
DMC	3861	144	0	0	0	0.0	0.0	0.0	0	0	1.000	
DMC	3862	615	0	0	0	0.0	0.0	0.0	0	0	1.000	
DMC	3864	331	0	0	0	0.0	0.0	0.0	0	0	1.000	
DMC	3865	153	0	0	0	0.0	0.0	0.0	0	0	1.000	